



The Messenger: November 2015
Edina Morningside Community Church, UCC

4201 Morningside Road, Edina, Minnesota 55416 (952) 926-6555
emcucc@emcucc.org www.emcucc.org

From Pastor Howard

In This Issue

[From Pastor Howard](#)

[Moderator's Corner](#)

[Christian Education](#)

[Daylight Update](#)

[Front Porch Friday](#)

[Financial Update](#)

[Pastoral Care](#)

[November Birthdays](#)

[Taize Worship 101](#)

[VEAP Update](#)

[November Calendar](#)

*Interim Pastor,
Rev. Howard K. Bell*



Halftime Adjustments

For my 50th birthday celebration in 1997, I had a large party with the theme of "Halftime".

I played sports as a young person, and continue to be a sports fan today, so the party had a sports theme to it. My husband, Christopher, even made a highly creative party invitation in the form of the Newspaper Sports Section Front Page. I chose the "halftime" theme to make fun of the fact that I probably was significantly beyond the "halftime" of my life expectancy, but I wanted to play with the thought of my living to 100. Social Security lists my life expectancy to be 85 years old as of today. So, I guess the longer I live, the closer I could get to an expectation of living to be 100!

This theme of "halftime" has emerged again for me as I reflect on having reached the expected halfway point of our Interim Ministry Time. My contract as your Interim Pastor began the end of April 2015 and extends one year through to the end of April 2016. I am relatively confident that, on the basis of life expectancy, I should be able to complete my contracted time. Also, I have an understanding that my contract may be extended on a month-to-month basis if needed so that I will likely remain in my role until a couple of weeks or so before the new Settled Pastor is called and able to start his/her ministry with you. For planning purposes, I am considering this a time for "Halftime Adjustments".

I believe that the first half of our Interim Ministry Time has been a time of important reflections. We

[Women's Fellowship](#)

[Preschool News](#)

[October Event Recap](#)

[Messenger Deadline](#)

[Thanksgiving Eve Service](#)

[Settled Pastor Update](#)

Pastoral Care

Taize Worship



Join us in the EMC sanctuary on Sunday, November 15th, for our regular Taize service, from 7-7:30, followed by a light soup supper in the library. All are welcome.

VEAP UPDATE

have reflected on our history and on living into our mission. (Don't forget to plan on attending the critical "Living Into Vision Summit" on Sunday, November 8th following worship from 11:30am - 1:00pm.) The Board of Christian Education (BOCE) under the leadership of Janet Anderson, Director of Children, Youth and Families, has developed new ministries such as Morningside U and Justice Events on the North Side of Minneapolis in partnership with Parkway United Church of Christ, Robbinsdale, MN. Marketing and Membership have been overseeing the complete remake of our website and implementing other marketing strategies. All of these important actions have occurred while maintaining all the critical ministries and services we have offered in recent years. We have eight Confirmands who have participated in a lock-in, service projects and Wednesday evening classes.

For where your treasure is, there your heart will be also. Matthew 6:21

What halftime adjustments do we need to make? I am often amazed at how some sports teams can come out of halftime and play an entirely different and improved game inspired by halftime adjustments. I pray that - in regard to our financial contributions - we can come out of this halftime inspired to give most generously to our church. The church has traditionally asked for its members to consider giving a tithe, or 10% of your income, to the church. Today, many churches speak to the "Modern Tithe" which is a gift of 5% to the church and 5% to other charities dear to the hearts of donors. What percentage do you feel called by God to consider in your pledge to Edina Morningside Church?

There is a need for a most critical "halftime adjustment" - one that will make possible all the



*Meeting Basic Needs.
Building Stronger Communities.*

Upcoming Activities: Thanksgiving

VEAP's Holiday Meals program delivers hot meals, donated by local restaurants and congregations, to home bound low- and fixed-income seniors and disabled adults on Thanksgiving and Christmas Day. These deliveries not only provide a hot meal on the Holiday, but also a friendly visit. Monetary donations to VEAP support these upcoming meals.

Holiday Toy Drive

VEAP will be looking for toys, games, and winter clothing to be collected by December 12. VEAP's goal is to provide one toy, one book, and two winter wear items per child and one game per household for low income families in Richfield, Bloomington, Edina, and south Minneapolis. All donations must be NEW items. In an effort to be equitable, VEAP will only distribute items valuing

other goals, visions and dreams that we have discerned for our future - in the financial support of our ministries. As you know, we approved a \$31,000 deficit budget for 2015. There was hope that our contributions might exceed our pledges, but as you see elsewhere in our Financial Update, overall, this has not happened up through September. Our most sincere thanks to those of you who have exceeded or plan to exceed your pledge amount for 2015.

The Board of Trustees are beginning to develop the 2016 Budget. They will adjust the budget to the results of the Stewardship Drive. This 2016 Stewardship Drive will culminate during the "second half" of our Interim Ministry Time on Sunday, November 15, with Pledge Sunday. We need everyone to seed in your pledge cards prior to that Sunday or bring them to worship with you on that Sunday. We are committed to a balanced budget in 2016. The only way that is possible is with an overall significant increase that will, minimally, cover the amount of that previous deficit. Without this increase, we will be faced with needing to cut services and ministries. Everything I have witnessed during our first six months together, tells me that no one wants to see this happen. Ideally, our Church Profile for our Pastoral Search needs to show an increase in giving, in ministry and in worship attendance to potential candidates in order to be an exceptionally attractive ministry site. I believe firmly that God is at work in the future at Edina Morningside Church. May we all seek God's guidance in discerning our 2016 Pledge.

Proverbs 3: 9-10

*Honor the Lord with your substance
and with the first fruits of all your produce;
then your barns will be filled with plenty,
and your vats will be bursting with wine.*

\$10-\$20. Click [here](#) for a detailed list of needs.

And don't forget that the food shelf can always use donations, at any time of the year. Let's fill up our narthex grocery cart!!

Barb Green, Deacons

November Calendar

[November Calendar](#)

Women's Fellowship



Thanks Ladies for a fantastic baked potato lunch. We had a yummy meal and wonderful fellowship! We appreciate all your efforts and ingenuity when things don't always go as planned.

I look forward to "barns filled with plenty" as we seek to implement all the action steps we are planning during the second half of our Interim Ministry Time: governance review, building projects and completing our Pastoral Search! It is an exciting and critical time. One of my favorite quotes is from the Preamble to the United Church of Christ Constitution: *It affirms the responsibility of the Church in each generation to make this faith its own in reality of worship, in honesty of thought and expression, and in purity of heart before God.* Let us carry on for future generations!

Moderator's Corner

by Sonja Martens

Happy November! As I sit here writing this, it has turned cold and we are seeing the first snowflakes of the season. The summer and fall seem to have just flown by!

As we move further into this church year, and our interim time, we are busy! We continue to do our traditional outreach, from feeding the hungry here in the Twin Cities to providing cows and school books to Daylight school in Kenya. At the Halloween party this last weekend, we had over 100 kids come to enjoy the festivities! In addition a beautiful new website, designed by Steve Ray and the Membership Committee, will be functional by the end of the year. A choir festival with other churches is under discussion, Morningside U is offering exciting opportunities and there is a monthly go-to-dinner opportunity that Janet is organizing, to name a few of the new activities.

Our interim work this last month has included

Happy Birthday!



NOVEMBER BIRTHDAYS

Nov 1 Amelie Fantin
Nov 3 Anna Clay
Nov 8 Kris Kulevsky
Nov 9 Gwen Williams
Nov 10 Annabell Sorensen
Nov 10 Luke Sorensen
Nov 11 Wendy Grim
Nov 14 Barb Green
Nov 19 Jayne Stevenson
Nov 20 Rob Joyce
Nov 22 Molly Cox
Nov 23 Charles Scriver
Nov 27 Ruth Stauffer
Nov 28 Emily Gunsch

Please let us know if we've missed your big day!!



PRESCHOOL NEWS

The children in preschool are having a fun fall of learning!

a number of small group opportunities for all of us to contribute our ideas and vision to the question of how we, as a church, live into the Mission and Vision we envisioned for ourselves during Revisioning focusing on four categories: spiritual, outreach, fellowship and physical plant.

At the Cabinet and Trustee retreat held two weeks ago, the group formulated three "we will" statements that will be part of their report to the Summit and that are intended to be a basis for future strategic planning. As a preview, I will share just one: "We will prioritize our outreach with a focus on the root causes of injustice, and increase our impact by partnering with others." **Please plan to attend the Summit, after church on November 8, where the small groups will report in and we, as a community, can talk about our goals for the future.**

Also, we are deep into our annual Stewardship drive, which will culminate in Pledge Sunday on November 15. Edina Morningside is, and has been, a part of all our lives. My family started coming to Edina Morningside 10 or 11 years ago, and we joined soon after that. Twenty minutes later at coffee (give or take 10 minutes), Leah Lamont asked me if I would serve with her on the Stewardship Committee. I didn't even know what that was, but I was so flattered I said yes. (You know what they say about "Fools rush in....") So, you might say I have spent my entire membership time here at EMC learning what Christian "stewardship" means, at least in my life.

My legal training, and parenthood, has taught me that a definition of terms is important. So, let's start by defining the term "stewardship." The first entry I found when I googled "stewardship" was at www.vocabulary.com: "Stewardship means the management or care of something, particularly the kind that works." I think we can all agree

Our social goal for November is caring. The children will be learning how to care for friends, pets, plants and how to take care of school. This month we will have "buddy time". The children will be paired up with another child to play with for the first 10 minutes of playtime. We are working on making new friends!

The children will be busy finishing up cooking projects for our Thanksgiving Feast.

We will be making applesauce, pumpkin muffins and butter to eat at the "Feast". We will be inviting our families at school to join us. We will eat, sing a few thankful songs and enjoy time with others.

Preschool will be closed the week of November 23rd- 27th to enjoy Thanksgiving with friends and family.

Thank you,
Melissa, Jessie & Destiny

October Event Recap

Morningside U:

stewardship is managing or taking care of something. But personally, I think Christian stewardship is a lot more than that. Christian stewardship is two things: (1) it is the response we make out of our gratitude for the abundance we have been given, and (2) it is how we grow our gratitude and faith.

God has been very good to me and my family. We certainly have everything we need: food, shelter, clothing, each other, community - in abundance. And we feel it is important to us to give back. Just like it is important to thank your mother for the birthday gift, it is important to thank God for what we have. After all, it all came from God originally.

And the intentional, planned giving of time, talent and treasure increases gratitude and strengthens faith. We all know that having skin in the game increases your appreciation. Which toy does a child care for more carefully - the one that just appeared or the one they did chores every day for a month to earn? Every month when I make our pledge payment, it gives me a chance to reflect on how blessed we are to be able to make that gift and to see that God has provided even though we have been dependent on only one income for quite a while now.

And what are we caring for here at Edina Morningside Community Church? How does our stewardship here at EMC give back to God? All the outreach we do, in so many arenas, and all the love and support we share with one another and those we encounter is only a start. We are continuing to expand our Vision of living Jesus' example. I ask you to prayerfully consider all your gifts of time, talent and treasure. And please, be sure to include your pledge to Edina Morningside as part of your stewardship, your giving back. Be a part of this



Twenty-five people from elementary school students to retired folks to post-college artists and fans met in Fellowship Hall on Saturday, October 24th for a dynamic presentation by long-time DC Comics writer and illustrator Dan Jurgens. Dan is a member who shared his eye-delighting work as part of the church's new ministry of talent: Morningside U!

Halloween Fun:

The EMC annual Halloween party/Haunted House was a great success. Lots of folks from our church, EMC preschool and the neighborhood filled the building and enjoyed Halloween fun and games.



ministry and see just how much we can accomplish when we do it together and trust in God.

Christian Education

YOUTH OUTREACH TO MINNEAPOLIS CRISIS NURSERY: SUNDAY, NOVEMBER 8
9:00-11:30 a.m.



A small group of youth is needed to develop a creative snack to serve to kids at the Minneapolis Crisis Nursery on Sunday morning, November 8th. We will meet at church at 9:00 a.m. and head to the nursery at 4544 4th Avenue South to prep our snack. Service is at 10:00 when we will interact with the kids, after which we'll clean up and head back to Morningside. Two kids are signed up, and we can use two or three more. Note that there will be no Sunday school for high school students on this morning. If you would like to help but can't come on Sunday, you can shop for our snack just connect with [Janet](#).

MORNINGSIDE U: MAKING LEFSE!

Hmm... this Fortune Teller looks

familiar



Halloween Bingo anyone???



The Ringmaster at work



This group of "clowns" keeps Ringmaster Greg on his toes.



Every Circus needs these two guys drumming up



SATURDAY, NOVEMBER 14

10:00 a.m.-Noon

Our ministry of talent continues with a presentation by Marge Ellingson and Pam Olson on how to bake lefse. If you haven't registered yet, please do so by emailing Laurie in the church office. We need to know how many are coming so that we are sure students will be able to fit in the kitchen and see all of the action. And don't forget to invite your friends!

ADULT CONVERSATION:

MORAL FOUNDATIONS ACROSS THE
BOUNDRIES: PROGRESSIVE TO
CONSERVATIVE

Sunday, November 15

11:30 a.m. - 1 p.m.

We will watch a 47minute video interview between Bill Moyers and Jonathan Haidt followed by a discussion facilitated by Pastor Howard. Jonathan Haidt is a professor of business ethics at New York University's Stern School of Business. He is the author of [The Righteous Mind: Why Good People are Divided by Politics and Religion](#). He studies the psychological foundations of morality and is working on several projects to help people transcend moralistic divisions and understand each other. You can learn more about this work by visiting the website: www.moralfoundations.org

FAMILIES MOVING FORWARD

customers!!

Messenger Deadline



Articles for the December messenger are due in the office on November 23rd.

Ecumenical Thanksgiving Eve Service



Ecumenical Thanksgiving
Eve Service
Wednesday, November 25
6:30pm
Good Samaritan United
Methodist Church
5730 Grove St, Edina, MN
55436

Everyone is invited to participate in this special service of thanksgiving.

AT PARKWAY UCC:
MONDAY, DEC 7
5:30-7:30 p.m.



Please mark your calendars now and sign up in the narthex to serve dinner to homeless families at Parkway UCC in North Minneapolis. We'll need people to plan a meal, grocery shop, cook, serve, entertain kids, and clean up. Please connect with [Janet](#) if you can commit to helping.

THE CHRISTMAS PAGEANT IS COMING!

On November 22, I will have all ages of Sunday school students for a read-through of the Christmas pageant. This year's play was written by our own Alex Heetland, with minor revisions and improvisations by Janet Anderson. If you are interested in rehearsing students on Sunday mornings prior to the pageant on December 20th, connect with Janet Anderson.

ADVENT BIBLE STUDY

Pastor Howard Bell
Sundays, Nov 29; Dec 6, 13 and 20
8:15am - 9:15am

We will be using the lectionary readings for each week in Advent for the basis of this Bible Study. You may bring your favorite version of the Bible so that we can compare translations. Additional resources may also be offered for advent devotional practices.

[Janet Anderson](#)

Director, Children, Youth & Family Life

Pastor Howard will be participating in worship leadership and **Alex Heetland** has invited **EMC members** to join him in singing with the **Good Samaritan Choir**. You are welcome to invite visiting family and friends. All are welcome.

Settled Pastor Update

Greetings from the Settled Pastor Search Committee. We are continuing with our committee meetings, and still working on our church profile.

We have recently sent out a survey to gather some information about our church. We have received excellent response so far. If you haven't responded yet, please check your email, and take a few minutes to respond. We also have paper copies of the survey available in the Narthex.

In case you are interested, the UCC has a video about the search process. We have received permission from the UCC to post it to YouTube, and it is

DAYLIGHT CENTER & SCHOOL, KENYA



EMC Contact:

Pam DeLaitre

pdelait@earthlink.net

Click on the link below to read about Gloria and high school at Daylight.

[November update for Daylight School](#)

Daylight Gratitude Tea Jambo, Daylight Partners!

We're writing today to invite you to Daylight's Gratitude Tea on November 8th at 3 PM. The event is for friends, supporters and a reunion of-sorts for people who have been on trips to Daylight. You will hear stories from people who have visited Daylight and learn how you can grow with Daylight as we look towards the future. Please join us!

Sunday, November 8th, 2015 3:00 PM
Lynnhurst Congregational UCC
4501 Colfax Ave S, Minneapolis, MN 55419

Benefit Concert to Benefit Daylight

Join us for a great night of Music with

Peter Miller of We Are The Willows
A.M.Stryker
Josh Cleveland

Saturday, November 14th, 2015
7 PM Doors/8 PM Music, Solomon's Porch

located [here](#)

It is about 25 minutes long.

Each search committee member has watched it, and you are invited to view it as well. Please let me know if you find it a useful resource.

As a reminder, From a timing perspective, our overall goal is to:

- 1) Have the Church Profile completed and ready to send out by the end of 2015. It will be a lot of work to pull this together in a short timeframe.
- 2) Post the job opening in January and conduct phone/skype interviews as the candidates apply.
- 3) Hold in person interviews for the final candidates in February and March.
- 4) If all goes well... present the final candidate to the congregation in April for a May start date.

The Church Profile is essentially the marketing booklet that we send out to applicants. It contains a lot of information about the church, our history, mission/vision, outreach programs, finances, and staff.

Each search committee member is pulling together information on these areas of

100 W 46th St., Minneapolis, MN 55419

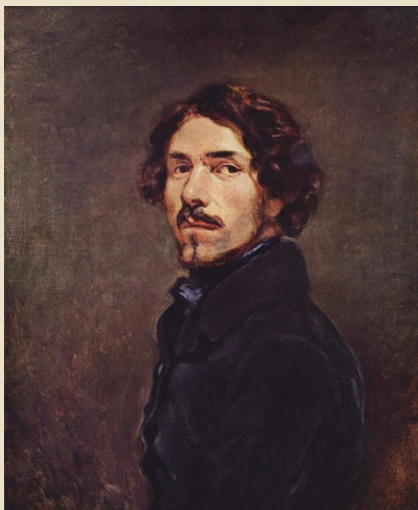
Please continue to keep the people of Kenya, the dedicated people who support Daylight, and the staff and children at Daylight in your prayers. Blessings!

Pam

Front Porch Friday in November



DELACROIX EXHIBIT AT MIA -
November 13



A major exhibit has opened at the MIA - Minneapolis Institute of Art. Delacroix was a major painter in the realistic, romantic style who influence a whole generation of artists. Many of these artists -

the profile:

*Local Search Profile: Laurie Cory
Church Finances: Barb Green
Financial Support of Ministerial Leaders: Doug Toth
Community Characteristics: Karin Miller
Congregational Life: Larry Williams, with support from Cathy Baldwin and Don Patrick
Wider Church Connections: Cathy Baldwin
Relationship with Ministerial Leaders: Martha Phelps
General: Jeff Strickler*

If you would like more information about the Church Profile, the full description of the document from the UCC is available by clicking [here](#).

Overall, when reviewing a Church Profile, prospective pastors are looking for information in four areas:

- 1) Trends in membership and church finances*
- 2) Compensation - what are we able to offer*
- 3) History - what is the history of the church and how did we deal with any conflict*
- 4) Other qualities - What is it*

Cezanne, Van Gogh, etc worked in very different styles, but were influenced by Delacroix's use of color.

This exhibit contains many of Delacroix's creations, as well as examples from the artists he influenced. It should be well worth seeing - and is only here through early January.

While admission to the MIA is free. tickets for the exhibit are \$20. It's best if they are reserved ahead of time, so we really need to know who is planning to attend. The plan is to meet at church at 10:00 AM, carpool to the MIA, and join the 11:00 tour. We will lunch together afterwards.

Please RSVP by signing up on the bulletin board in the narthex or by contacting [Molly Cox](#) or [Laura Simonson](#).

about our church

mission & outreach that makes us a great fit for their unique gifts

Please let me or any committee member know if you have any questions, comments or concerns. We appreciate all your thoughts and prayers as we work through the settled pastor search process.

Doug Toth, chair on behalf of the Settled Search committee members Laurie Cory, Barb Green, Karin Miller, Larry Williams, Cathy Baldwin, Don Patrick, Martha Phelps and Jeff Strickler.

Financial Update

September 30, 2015 Update on Status of Pledged Income

Pledge Income	Month of September	YTD Sept. 30
Budgeted Pledge Income	\$16,185	\$145,665
Actual Pledge Income	\$13,332	\$135,075
Variance	-\$2,853	-\$10,590

If your pledge amount is behind schedule, please consider getting caught up prior to the end of November. Also, please consider an increase to your giving to decrease the \$31,000 approved budget deficit, if possible.

Contact Us

Church Office,
emcucc@emcucc.org

Interim Pastor
pastorhoward@emcucc.org

Christian Education
ce.youth@emcucc.org

Edina Morningside Community Church, UCC
952-926-6555

Edina Morningside Community Church is Open and Affirming.

Find us online: [EMC's Facebook page](#)

And find archived newsletters and calendar information at our web site:

[Edina Morningside Community Church](#)

Copyright © 2015
. All Rights Reserved.